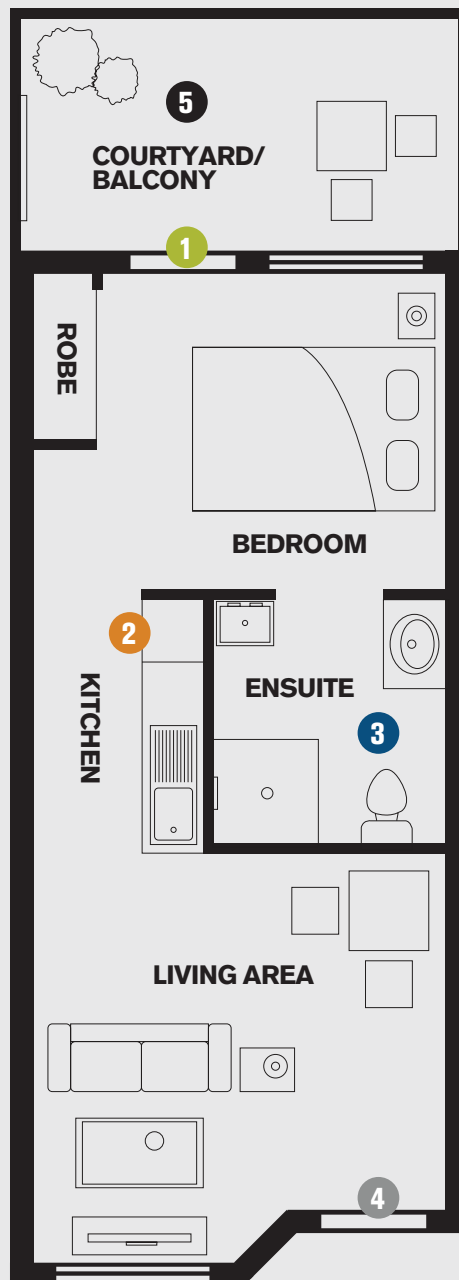
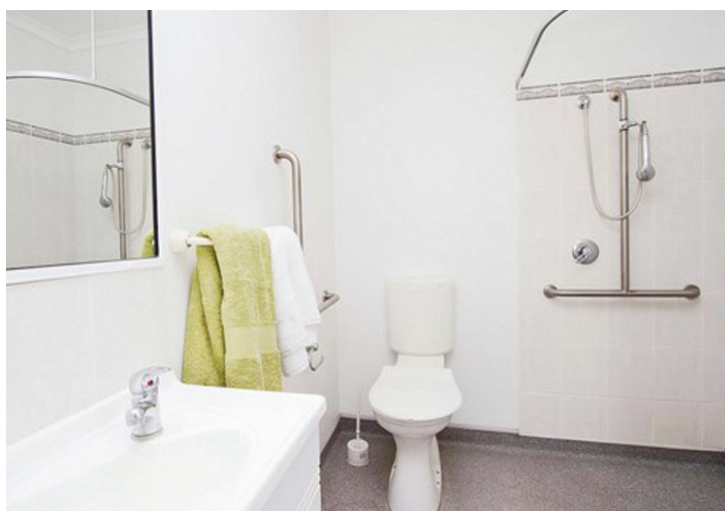


UNIT FLOOR PLAN

affordable rentals for seniors...



- 1** Security Screens & Sliding Doors
- 2** Self-Contained Kitchen
- 3** Senior Friendly Taps and Grab Rails
- 4** Security Doors
- 5** Private Courtyard/Balcony

Our senior-friendly units have been designed for simple, easy living with a focus on space, comfort and privacy.

All units comprise a cosy living area, kitchen complete with a freestanding oven and cooktop, large open bedroom, ensuite, and a private courtyard/balcony perfect for an outdoor setting.



EUREKA PIONEER PLACE SOUTHPORT

affordable rentals for seniors...



Contact us today! ☎ 1800 356 818 @ enquiries@eurekavillages.com.au 🌐 eurekavillages.com.au